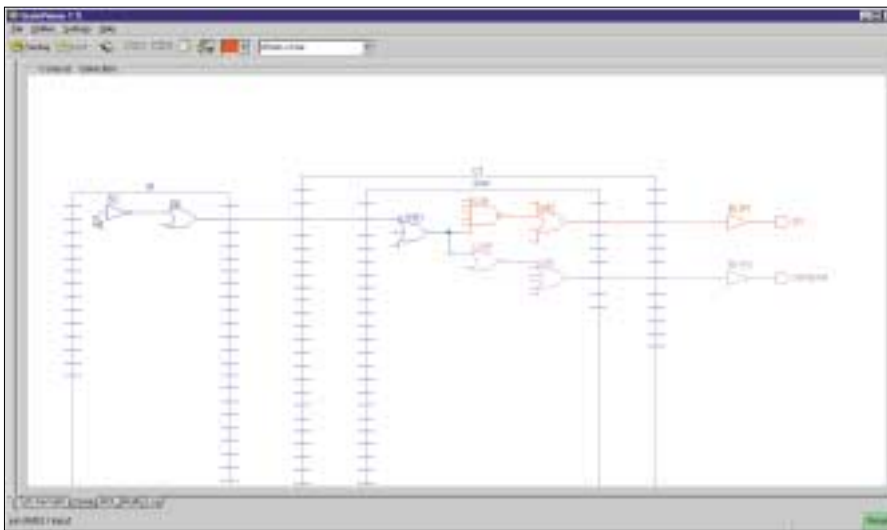




## Schematic Fragment Viewing

GateVision's unique logic cone features enable interactive navigation within just that portion of the circuit or schematic fragment that is most important for the job at hand.

User-controlled extension and reduction of the schematic fragments allow compelling signal path tracing through the complete design hierarchy. GateVision comes with a complete set of built-in schematic fragment extraction capabilities including input cone extraction, output cone extraction, user-configurable cone extraction, and a cone netlist export feature. This provides easy insight into the analyzed circuit, eases design debugging, and increases the productivity of the logic designer.

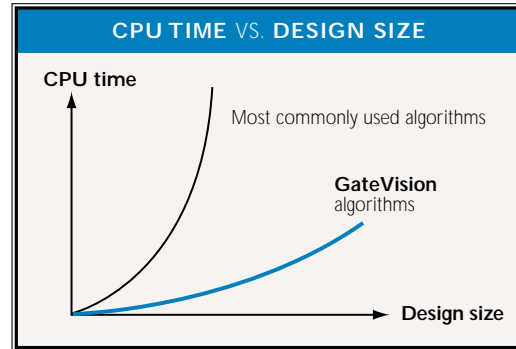


Context-sensitive menus show the operations that are currently available and make it easy to quickly extract the design fragments that are needed to understand or fix even the most complex problems within the design. It is also possible to mark a specific component as a target component and let GateVision explore paths between the target component and any other selected components.



## When Performance Counts

Concept Engineering's proprietary schematic generation algorithms and on-the-fly schematic creation guarantee highest speed and design capacity, and at the same time provide easy-to-read schematic diagrams. Anticipating the explosion in design sizes, Concept Engineering has designed GateVision to handle today's multi-million gate designs.



## Easy-to-use GUI



The powerful and easy-to-use search tool within GateVision provides quick access to any object or group of objects in your design. Once a search operation is executed, the results of the search operation are stored in a result list. From there, objects can instantly be highlighted or moved into the logic cone window. If you have located circuit components such as instances, ports, or nets that may be important for you at a later time, then simply bookmark these objects in GateVision's memory list. Object cross probing allows highlighting of selected objects in multiple design views.



## Plug & Play

As a best-in-class, plug-and-play point tool, GateVision can effectively serve as a fast and robust visualization engine that seamlessly fits into various EDA design flows.

## At a Glance

FEATURES	BENEFITS
On-the-fly schematic creation	Results in very high speed and capacity
Logic cone extraction	Automatically extracts logic cones from user-defined reference points, and shows just the important portion of the circuit
Interactive logic cone navigation	Allows compelling signal path tracing through the complete design hierarchy
Logic cone netlist export	Verilog netlist can be used with other EDA tools
Search-and-show capability	Easy location of specific objects shortens debug time
Design hierarchy browser	Provides easy navigation through the design hierarchy and gives compact hierarchy overview
Object cross probing	Highlights selected objects in all design views (schematic, logic cone and HDL view) and shortens debug time
Context-sensitive menus	Easy-to-use GUI
Verilog and EDIF netlist interface	Easily plugs into almost any design flow
Userware	Tcl scripts to extend GateVision

### SUPPORTED PLATFORMS

**WINDOWS 95/98/NT/2000**

**SUN SOLARIS**

**HP-UX**

**LINUX**

## Company Contact



**FIRST EDA LTD**  
Mercia House, South Bar  
Banbury, OX16 9AB, UK  
**t:** +44 (1295) 201250  
**f:** +44 (1295) 201252  
**e:** info@firsteda.com  
**w:** www.firsteda.com